

Development Application
Landscape Documentation
118A Soldiers Point Road, Soldiers Point, NSW

Lot 2 DP 627638

FEBRUARY 2020



THE SITE

SHEET INDEX

NO.	SHEET NAME	REV.	ISSUE:
01	SITE ANALYSIS	B	FOR DA SUBMISSION
02	LANDSCAPE MASTER PLAN	B	FOR DA SUBMISSION
03	LANDSCAPE MASTER PLAN	B	FOR DA SUBMISSION
04	LANDSCAPE PLAN - ENTRANCE	B	FOR DA SUBMISSION
05	LANDSCAPE PLAN - LEVEL 02	C	FOR DA SUBMISSION
06	LANDSCAPE PLAN - LEVEL 06	A	FOR DA SUBMISSION



View looking west across the site from the existing car park to the rear elevated north-western corner of the property.



LANDSCAPE APPROACH

- Retain all existing mature canopy trees on site where possible.
- Additional low native tree planting buffer along the western and northern boundaries to provide a vegetated edge to the site, providing a visual and acoustic screen for residents and adjoining neighbours.
- Provide a terraced garden space to create active and flexible communal spaces for resident use.
- Establish a green and visually pleasing aesthetic for residents looking out to the communal garden space.

LEGEND

- Site Boundary.
- 01 Existing trees to be retained.
- 02 Proposed buffer planting of low native trees and native grasses to provide a verdant screen along the western and northern boundaries.
- 03 Proposed feature tree planting low flowering garden beds.
- 04 Proposed retaining walls to create level grass terraces with bench seating for passive recreation use.
- 05 Existing development.
- 06 Proposed Level 02 Courtyards.
Refer Page 05 for details.
- 07 Proposed open lawn area with graduated slope to meet the lower ground level of existing gardens.
- 08 Proposed open lawn area to be graded to meet Floor 2 courtyards to ensure a natural transition to the rear communal garden space.
- 09 Accessible ramp to provide connection between Level 02 courtyard space and the communal gardens.
- 10 DDA compliant pathway.
- 11 Lower accessible terrace area with seating.
- 12 Upper grassed terraces and gardens.
- 13 Proposed building frontage and entrance landscaping. *Refer Page 04 for details.*
- 14 Indicative pathway for connection to pedestrian access through the existing car park.
- 15 Formalise car park area
- 16 Proposed median landscaping to match existing on site.
- 17 Pathway connection to existing carpark and building. *Refer Architectural Plans for details.*

02 Landscape Masterplan

118A SOLDIERS POINT RD,
SOLDIERS POINT, NSW

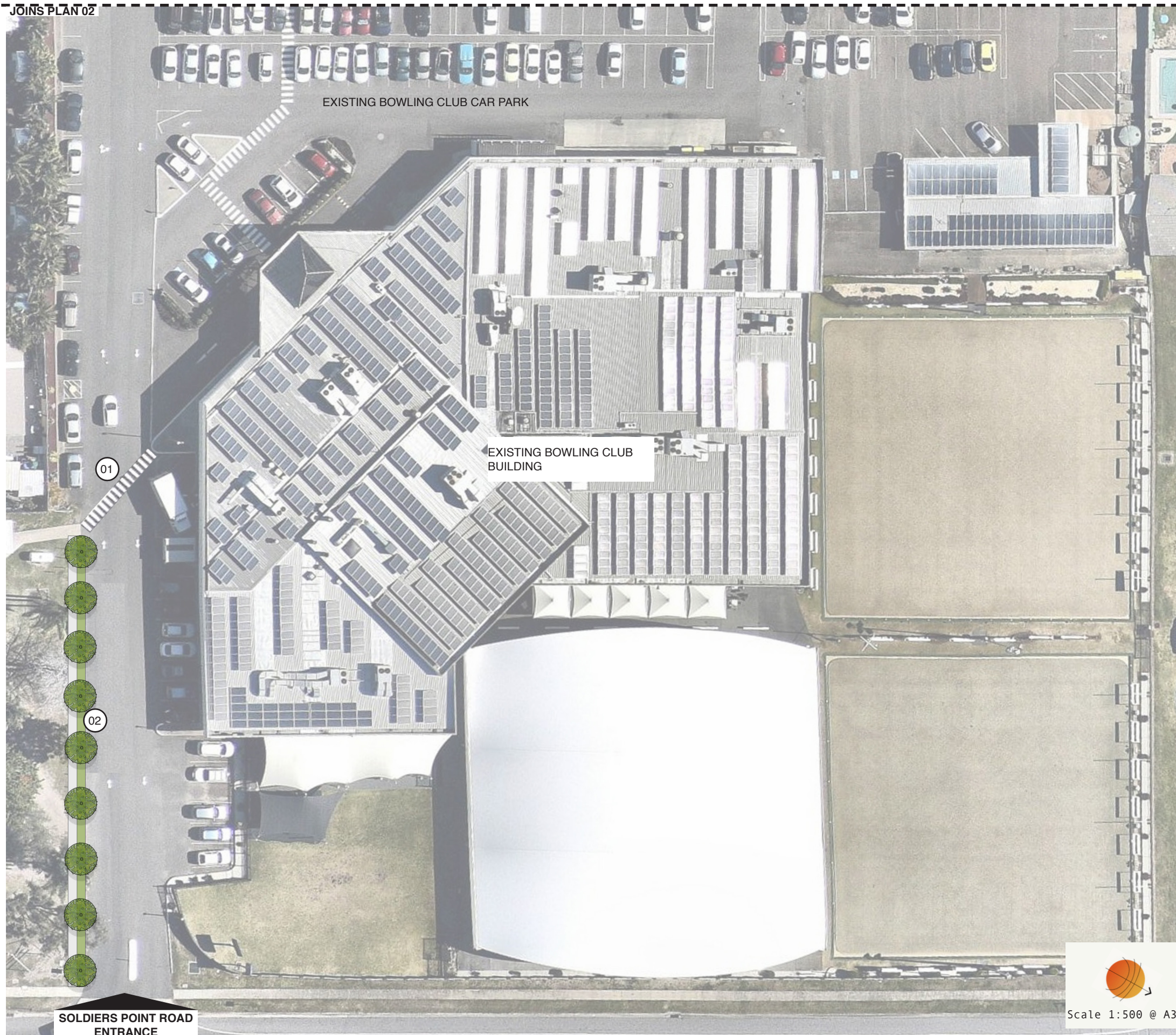
DATE:
FEBRUARY 2020

CLIENT:
SPBC

PROJECT NO.
GSP190146

GREEN SPACE PLANNING Co.
3/19 BOLTON STREET NEWCASTLE NSW 2300
PH 0423 684 382





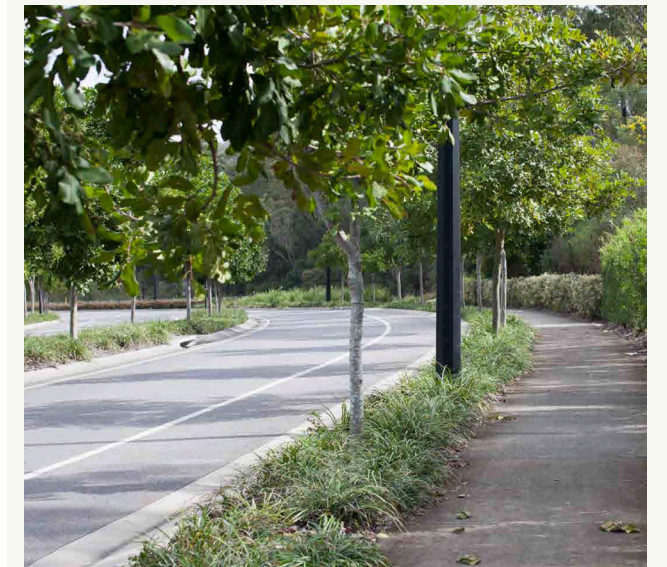
LANDSCAPE APPROACH

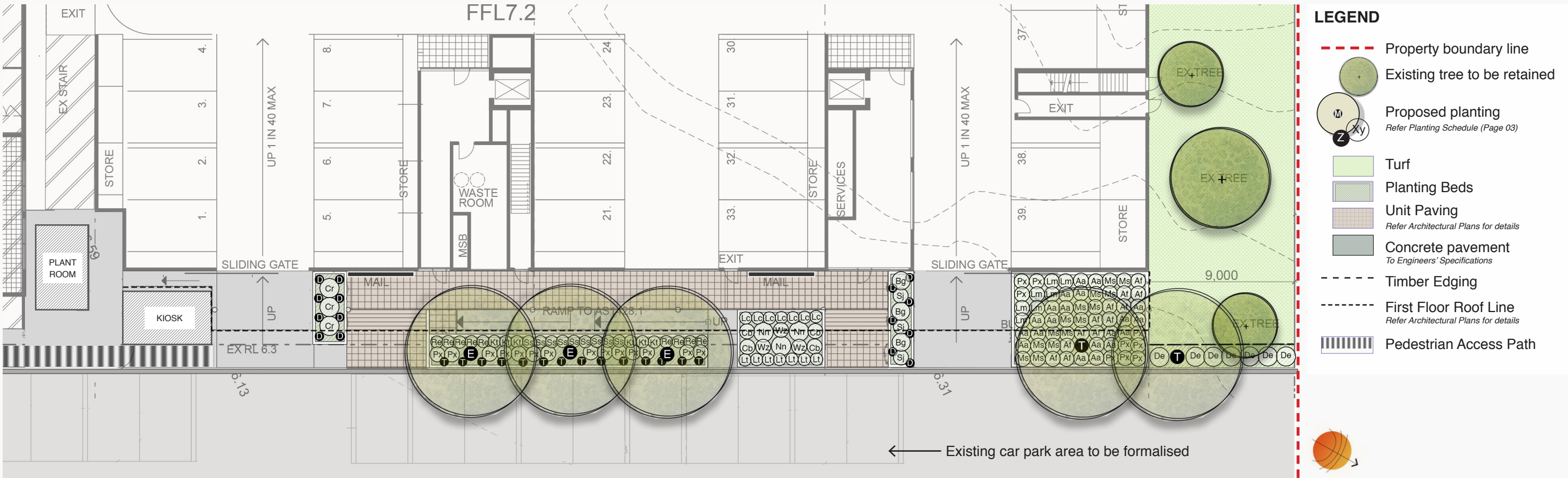
- A formal pathway and adjacent landscape strip consisting of low planting and an avenue of small street trees is proposed along the internal road off the entrance from Soldiers Point Road. This will improve the amenity of this space for both visitors arriving by car and the safety of pedestrians.
- Additional pedestrian crossing points are proposed to ensure a clear pathway is presented to connect people through the car park area.

LEGEND

- 01 Indicative pedestrian crossing connection to Bowling Club entrance.
- 02 Proposed pathway and landscape median. Planting to consist of low growing ground covers and suitable avenue of trees.

CHARACTER IMAGE





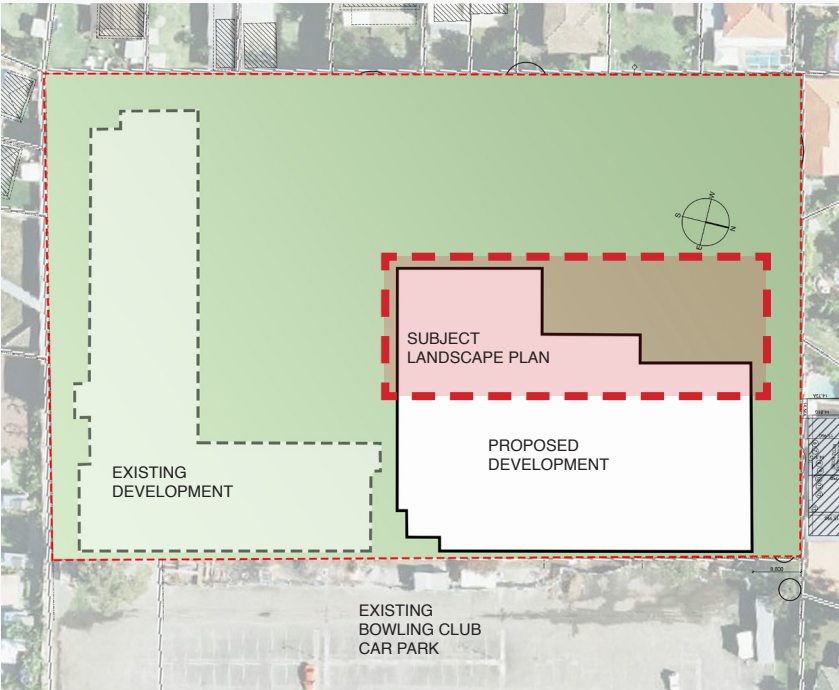
PLANTING SCHEDULE

Key	Botanical Name	Common Name	Pot Size	Mature Height
TREES				
E	<i>Corymbia ficifolia</i>	Red Flowering Gum	45L	10m
T	<i>Tristanopsis laurina 'Luscious'</i>	Water Gum	45L	8m
SHRUBS				
Aa	<i>Aloe arborescens</i>	Bush Baby Yellow	140mm	0.5m
Af	<i>Anigozanthos flavidus</i>	Kangaroo Paw	180mm	1.5m
Cb	<i>Crassula ovata 'Blue Bird'</i>	Crassula	100mm	0.5m
Kt	<i>Kalanchoe tomentosa</i>	Panda Plant	140mm	0.5m
Lc	<i>Loropetalum chinense</i>	China Pink	140mm	0.7m
Px	<i>Philodendron xanadu</i>	Philodendron	300mm	0.5m
Re	<i>Russelia equisetiformis</i>	Firecracker Plant	140mm	1m
Wz	<i>Westringia 'Zena'</i>	Coastal Rosemary	200mm	1m

PLANTING SCHEDULE continued

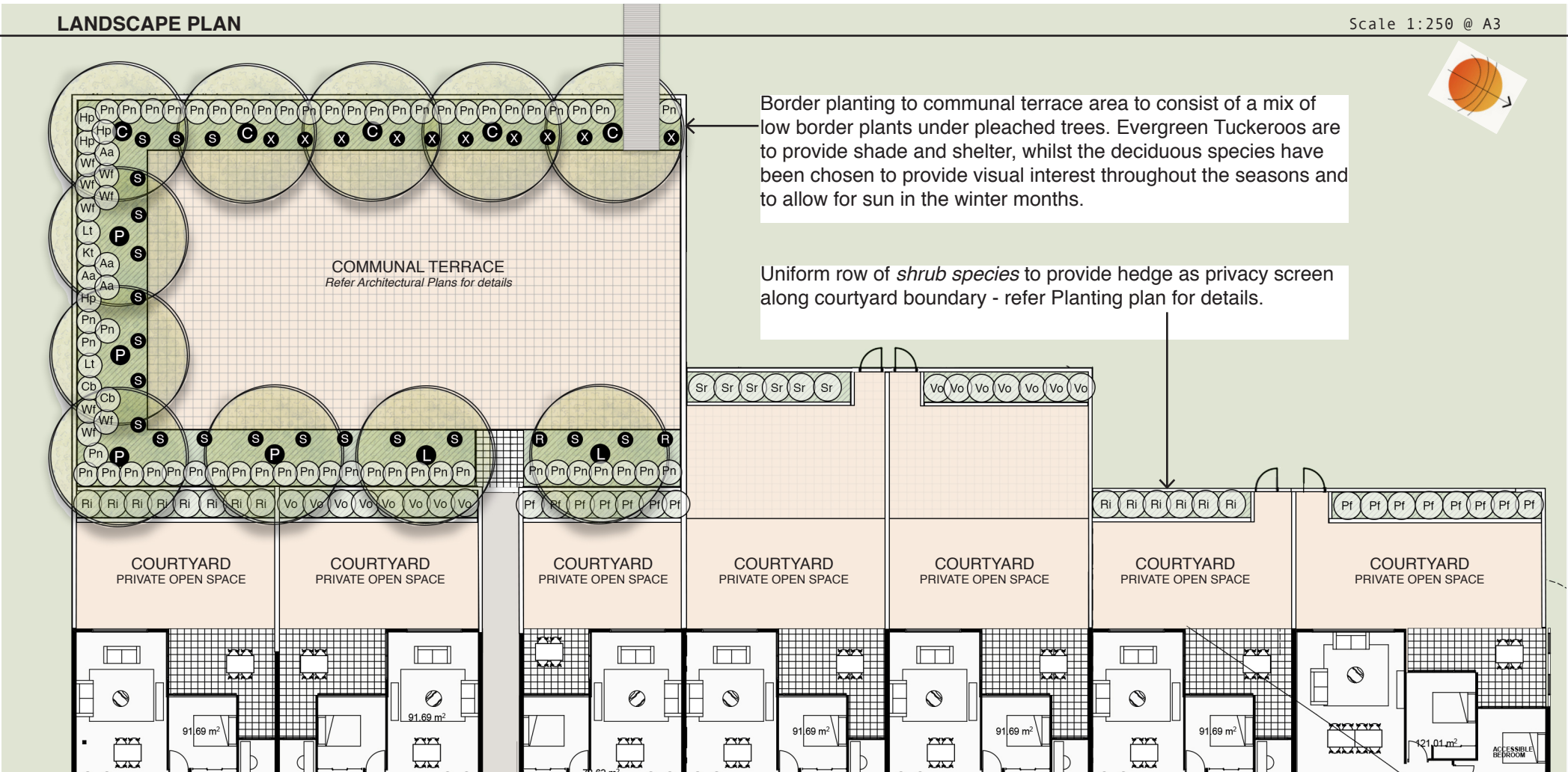
Key	Botanical Name	Common Name	Pot Size	Mature Height
ACCENT				
Bg	<i>Blechnum gibbum</i>	Silver Lady Fern	140mm	1m
Cr	<i>Cycas revoluta</i>	Sago Palm	300mm	2m
De	<i>Doryanthes excelsa</i>	Gynea Lily	300mm	2 - 4m
Nn	<i>Nolina nelsonii</i>	Blue Nolina	300mm	2m
Sj	<i>Strelitzia juncea</i>	FineLeaf Bird of Paradise	200mm	1.5m
GRASSES				
Lm	<i>Liriope muscari 'Evergreen Giant'</i>	Liriope	140mm	0.6m
Lt	<i>Lomandra 'Lime Tuff'</i>	Lime Tuff	140mm	0.4m
Ms	<i>Miscanthus sinensis</i>	Silver Feather Grass	Tube	0.6m
GROUNDCOVERS				
D	<i>Dichondra argenta</i>	Silver Falls	140mm	0.2m
T	<i>Trachelospermum 'Tricolour'</i>	Tricolour Jasmin	140mm	0.5m

KEY PLAN



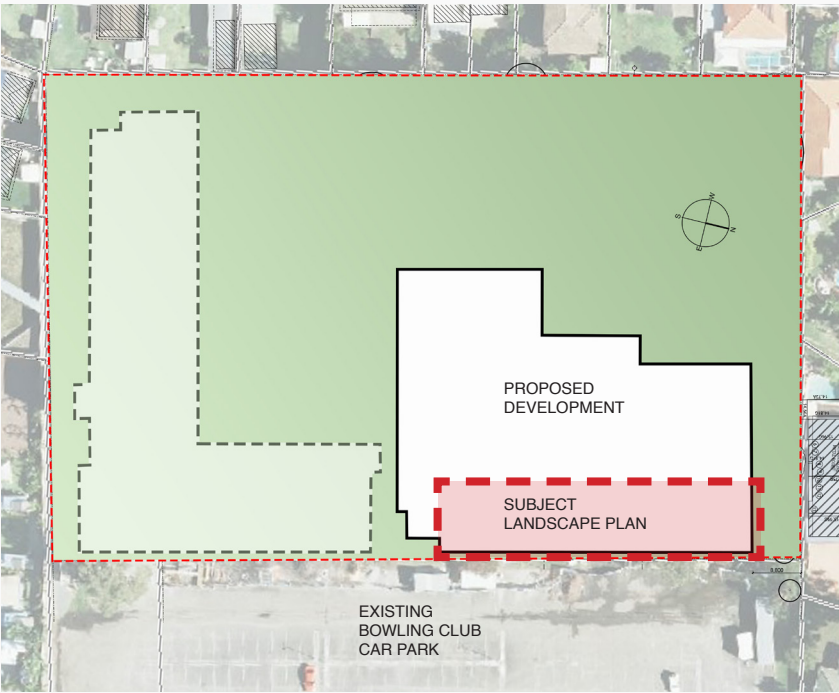
LANDSCAPE PLAN

Scale 1:250 @ A3



SUGGESTED PLANT SCHEDULE

Key	Botanical Name	Common Name	Pot Size	Mature Height	Key	Botanical Name	Common Name	Pot Size	Mature Height
TREES					BORDER SHRUBS				
C	Cupaniopsis anacardioides	Tuckeroo	45L	8m	Aa	Aloe arborescens	Bush Baby Yellow	140mm	0.5m
L	Lagerstroemia indica 'Natchez'	Crepe Myrtle	45L	5m	Cb	Crassula ovata 'Blue Bird'	Crassula	100mm	0.5m
P	Pyrus nivalis	Snow Pear	45L	6m	Hp	Helichrysum petiolare	Licorice Plant	140mm	0.5m
SCREENING SHRUBS					Kt	Kalanchoe tomentosa	Panda Plant	140mm	0.5m
Pf	Photinia fraseri	Red Robin	200mm	3m	Wf	Westringia 'Blue Gem'	Coastal Rosemary	200mm	1m
Ri	Raphiolepis indica	Apple Blossom	200mm	2m	GRASSES				
Sr	Syzygium 'Resilience'	Lilly Pilly	300mm	4m	Lt	Lomandra 'Lime Tuff'	Lime Tuff	Tube	0.4m
Vo	Viburnum odoratissimum	Sweet Viburnum	200mm	3m	Pn	Pennisetum 'Nafray'	Fountain Grass	Tube	0.6m
					GROUNDCOVERS				
					X	Carpobrotus glaucescens	Pigface	Tube	0.2m
					R	Dichondra repens	Kidney Weed	Tube	0.2m
					S	Senecio serpens	Blue Chalksticks	Tube	0.2m



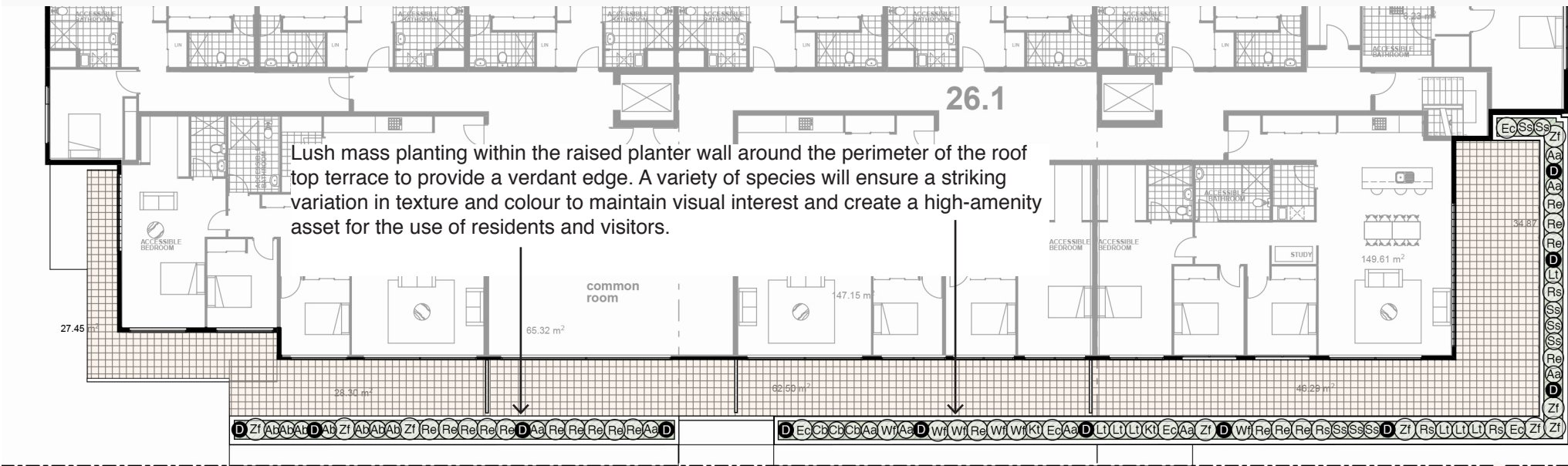
NOTES

The rooftop space comprises of a raised planter around the terrace edge, mass planted with low groundcovers, succulents and shrubs to ensure views out are unobstructed.

The planting scheme for this development incorporates a striking palette of plant species tolerant of the conditions of the roof.

Planting is intended to:

- Utilise a planting palette of proven performing plants which are hardy, tolerant of low-water conditions and are easily managed and maintained;
- Incorporate a diverse planting palette that utilises several species for each application, to ensure seasonal variation and allow for a consistent level of amenity in the instance one species under-performs;
- Create spaces, with robust species chosen for their bold and interesting texture, form and colour; which provide a high quality amenity for future residents, to ensure the roof top becomes a highly activated space;
- Provide sufficient soil depths and incorporate irrigation within the constraints of the site to ensure a healthy, productive and verdant landscape;
- Be robust, suited to the available aspect, work with ambient wind and light levels and minimise maintenance and water use.



SUGGESTED PLANT SCHEDULE

Key	Botanical Name	Common Name	Pot Size	Mature Height
Aa	<i>Aloe arborescens</i>	Bush Baby Yellow	140mm	0.5m
Ab	<i>Agave 'Blue Glow'</i>	Blow Glow Agave	200mm	0.6m
D	<i>Dichondra argenta</i>	Silver Falls	140mm	0.2m
Ec	<i>Euphorbia characias</i>	Mediterranean Spurge	200mm	1.2m
Kt	<i>Kalanchoe tomentosa</i>	Panda Plant	140mm	0.5m
Lt	<i>Lomandra tanika</i>	Lomandra	140mm	0.5m
Re	<i>Russelia 'equisetiformis'</i>	Firecracker Plant	140mm	1m
Rs	<i>Rhagodia spinescens</i>	Flat Bush	140mm	0.4m
Ss	<i>Sansevieria Superba</i>	Mother-in-law's Tongue	140mm	1m
Wf	<i>Westringia 'Blue Gem'</i>	Dwarf Rosemary	140mm	0.5m
Zf	<i>Zamia furfucea</i>	Cardboard Plant	200mm	1m

CHARACTER IMAGES

